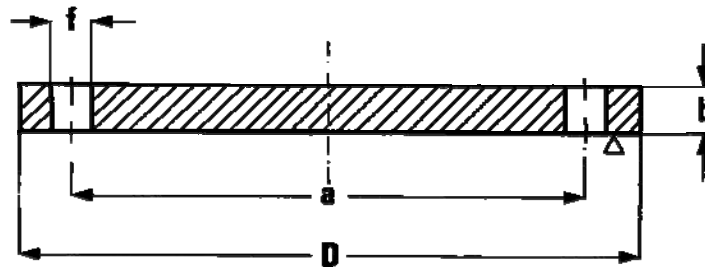


# Flange cieche UNI 6094-67 PN 25 UNI 6095-67 PN 40



DN	a	D	b	f	VITI	N. FORI	Kg.
----	---	---	---	---	------	---------	-----

## UNI 6094-67 PN 25

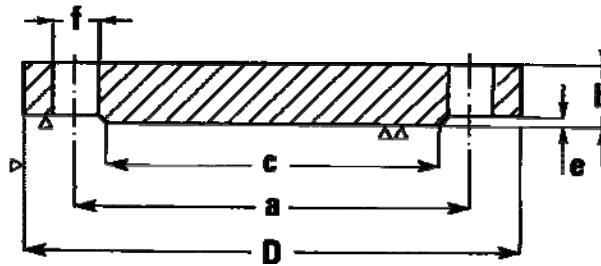
DAL DN 10 AL DN 150 USARE FLANGE PN 40 ñ UNI 6095-67

200	310	360	30	25	M22	12	22,600
250	370	425	32	30	M27	12	33,500
300	430	485	34	30	M27	16	46,300
350	490	555	38	33	M30	16	68,100
400	550	620	40	36	M33	16	89,700
450	600	670	42	36	M33	20	109,000
500	660	730	44	36	M33	20	137,000

## UNI 6095-67 PN 40

10	60	90	16	14	M12	4	0,720
15	65	95	16	14	M12	4	0,810
20	75	105	18	14	M12	4	1,140
25	85	115	18	14	M12	4	1,380
32	100	140	18	18	M16	4	2,030
40	110	150	18	18	M16	4	2,350
50	125	165	20	18	M16	4	3,200
65	145	185	22	18	M16	8	4,290
80	160	200	24	18	M16	8	5,530
100	190	235	24	22	M20	8	7,590
125	220	270	26	25	M22	8	10,800
150	250	300	28	25	M22	8	14,700
200	320	375	34	30	M27	12	27,200
250	385	450	38	33	M30	12	44,400
300	450	515	42	33	M30	16	64,200
350	510	580	46	36	M33	16	89,500
400	585	660	50	39	M36x3	16	127,000
450	610	685	52	39	M36x3	20	141,000
500	670	755	52	42	M39x3	20	172,000

# Flange cieche UNI 6096-67 PN 64 UNI 6097- 67 PN 100



DN	a	D	b	c	f	e	VITI	FORI	Kg.
----	---	---	---	---	---	---	------	------	-----

## UNI 6096-67 PN 64

DAL DN 10 AL DN 25 USARE FLANGE PN160 ñ 6098-67

PER IL DN 32 E IL DN 40 USARE FLANGE PN100 ñ UNI 6097-67

50	135	180	26	95	22	3	M20	4	4,500
65	160	205	26	120	22	3	M20	8	5,680
80	170	215	28	130	22	3	M20	8	6,840
100	200	250	30	160	25	3	M22	8	10,000
125	240	295	34	185	30	3	M27	8	15,900
150	280	345	36	215	33	3	M30	8	23,300
200	345	415	42	270	36	3	M33	12	39,000
250	400	470	46	325	36	3	M33	12	56,400
300	460	530	52	375	36	4	M33	16	80,500
350	525	600	56	435	39	4	M36x3	16	112,000
400	585	670	60	485	42	4	M39x3	16	151,000

## UNI 6097-67 PN 100

DAL DN 10 AL DN 25 USARE FLANGE PN 160 ñ UNI 6098-67

32	110	155	24	75	22	2	M20	4	3,060
40	125	170	26	85	22	3	M20	4	3,950
50	145	195	28	95	25	3	M22	4	5,640
65	170	220	30	120	25	3	M22	8	7,500
80	180	230	32	130	25	3	M22	8	8,870
100	210	265	36	160	30	3	M27	8	13,300
125	250	315	40	185	33	3	M30	8	21,300
150	290	355	44	215	33	3	M30	12	29,400
200	360	430	52	270	36	3	M33	12	52,500
250	430	505	60	325	39	3	M36x3	12	85,100
300	500	585	68	375	42	4	M39x3	16	129,000
350	560	655	74	435	48	4	M45x3	16	175,000